

## Community health events — increasing access to health care services



Community health events bring on-site health care services to local facilities in a safe and effective manner. They provide participants with essential health services, as well as valuable information about their current health status.

### **Managing community health events from beginning to end**

OptumServe has an established process for managing and executing community health events for individuals in need of certain of health care services. These services are conducted at a centralized location to make it convenient and safe for the community to access. Teams of professionals are sent to administer services wherever they are needed. OptumServe coordinates the necessary supplies and equipment needed at each location through a robust supply chain process. This maximizes efficiency and improves the experience for participants. OptumServe performed more than 2.9 million health services through community health events in 2019, and we have over 20 years of experience implementing these events across the United States.

OptumServe has a configurable workflow and data management platform, which was developed utilizing the latest technology, to operate secure web portals for interfacing with health care data obtained from community health events. With the ability to simultaneously conduct these community health events at multiple locations across the country seven days a week, we can accommodate a large surge of individuals requiring health care services and rapidly scale this model to meet the needs of a population.



### **About OptumServe**

OptumServe is the federal health services business of Optum and UnitedHealth Group (NYSE: UNH). We are proud to partner with the Departments of Defense, Health and Human Services, Veterans Affairs and other organizations to help modernize the U.S. health system and improve the health and well-being of those we collectively serve.

**20+**

YEARS OF EXECUTING  
COMMUNITY HEALTH  
EVENTS

**2.9M+**

HEALTH SERVICES  
PROVIDED THROUGH  
COMMUNITY HEALTH  
EVENTS IN 2019

## Services provided

Depending on the needs of the population, OptumServe has a variety of health services that can be delivered on site, including:



Immunizations



Laboratory services



Health assessments



Audiology services



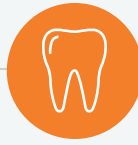
Physical exams



Health screenings



X-ray and radiology services



Dental exams & treatment



Behavioral health

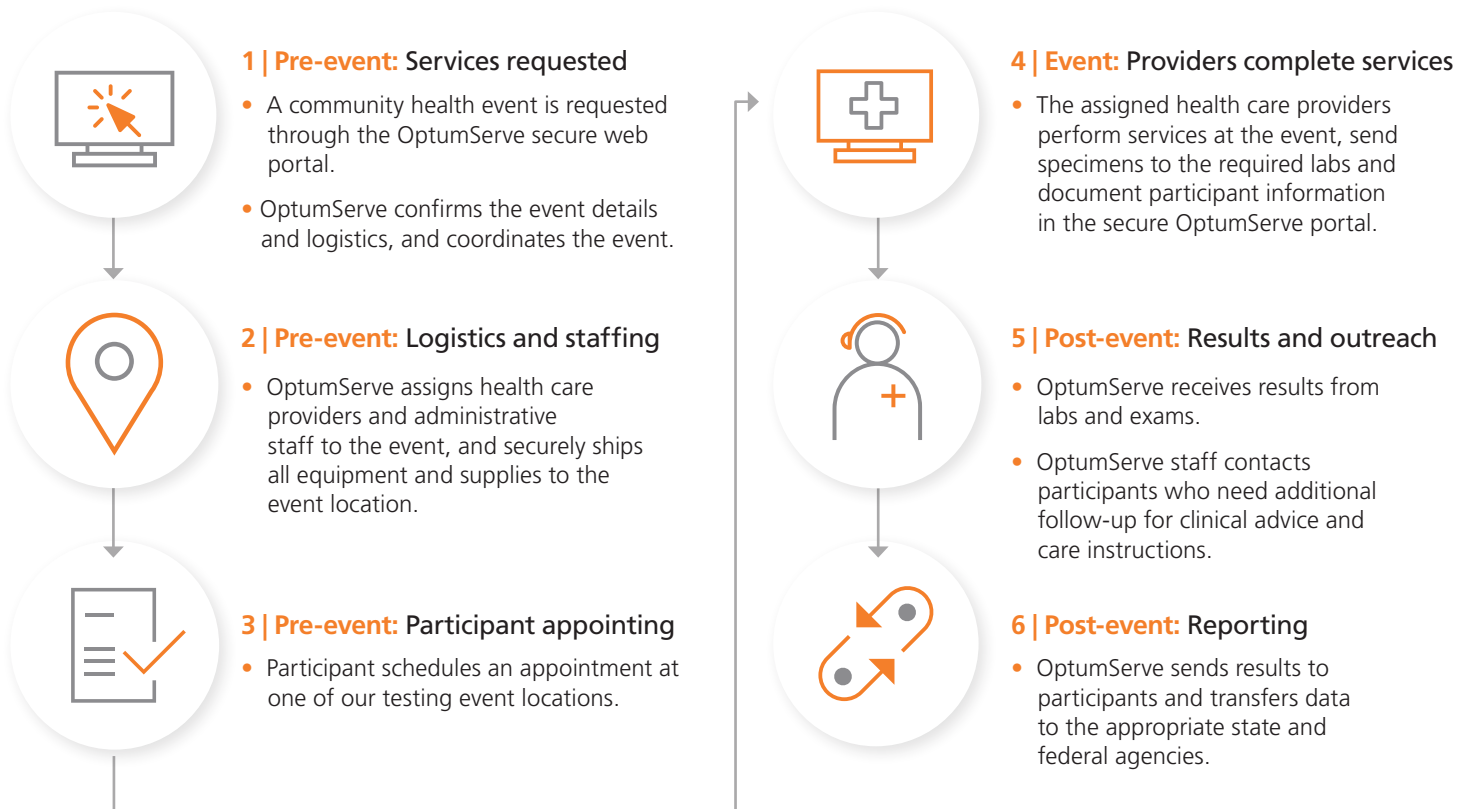


Vision services

**495K** health screenings completed in 2019 at community health events

Now serving state and local communities across the U.S. to support community health events

## Community health event process



OptumServe is a trademark of Optum, Inc. All other trademarks are the property of their respective owners. Because we are continuously improving our products and services, Optum reserves the right to change specifications without prior notice. Optum is an equal opportunity employer.

© 2020 Optum, Inc. All rights reserved. WF2383361 4/20

For more information:

**Visit:** [optumserve.com](https://optumserve.com)

**Call:** 1-800-765-6092

**Email:** [innovate@optum.com](mailto:innovate@optum.com)